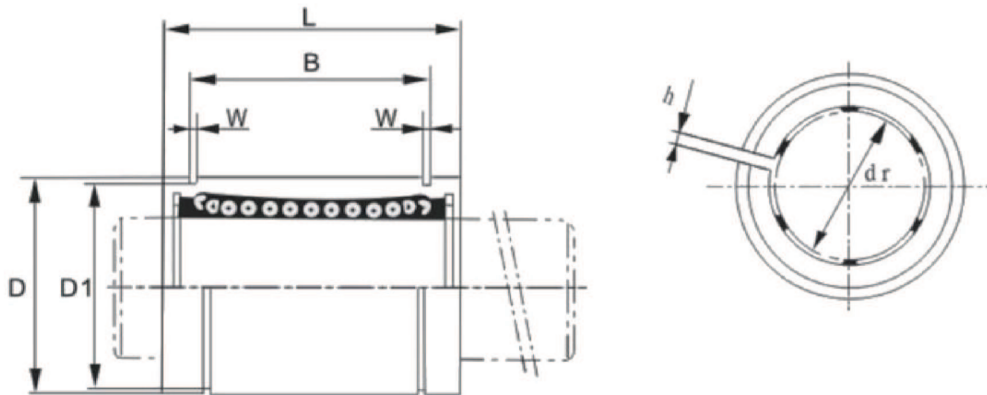


Linear Bearing LM_AJUJ



MODEL	NUMBER OF BALL ROWS	MAIN DIMENSIONS													ECCENTRICITY [MAX.]	BASIC LOAD RATING		WEIGHT [g]
		INSCRIBED CIRCLE DIAMETER		OUTER DIAMETER		LENGTH		OUTER LOCKING GROOVE			W	h	Φ	DYNAMIC C[kgf]		STATIC Co[kgf]		
		dr	TOLERANCE	D	TOLERANCE	L	TOLERANCE	B	TOLERANCE	D1								
LM6AJUU	4	6	0 -0.009	12	0 -0.011	19	0 -0.2	13.5	0 -0.2	11.5	1.1	1		0.012	21	27	6	
LM8AJUU	4	8	0 -0.009	15	0 -0.011	24	0 -0.2	17.5	0 -0.2	14.3	1.1	1		0.012	27	41	14	
LM10AJUU	4	10	0 -0.009	19	0 -0.013	29	0 -0.2	22	0 -0.2	18	1.3	1	80°	0.012	38	56	27	
LM12AJUU	4	12	0 -0.009	21	0 -0.013	30	0 -0.2	23	0 -0.2	20	1.3	1.5	80°	0.012	42	61	31	
LM13AJUU	4	13	0 -0.009	23	0 -0.013	32	0 -0.2	23	0 -0.2	22	1.3	1.5	80°	0.012	52	79	39	
LM16AJUU	5	16	0 -0.009	28	0 -0.013	37	0 -0.2	26.5	0 -0.2	27	1.6	1.5	80°	0.012	79	120	73	
LM20AJUU	5	20	0 -0.01	32	0 -0.016	42	0 -0.2	30.5	0 -0.2	30.5	1.6	1.5	60°	0.015	88	140	80	
LM25AJUU	6	25	0 -0.01	40	0 -0.016	59	0 -0.3	41	0 -0.3	38	1.85	2	50°	0.015	100	160	205	
LM30AJUU	6	30	0 -0.01	45	0 -0.016	64	0 -0.3	44.5	0 -0.3	43	1.85	2.5	50°	0.015	160	220	230	
LM35AJUU	6	35	0 -0.012	52	0 -0.019	70	0 -0.3	49.5	0 -0.3	49	2.1	2.5	50°	0.02	170	320	366	
LM40AJUU	6	40	0 -0.012	60	0 -0.019	80	0 -0.3	60.5	0 -0.3	57	2.1	3	50°	0.02	220	410	549	
LM50AJUU	6	50	0 -0.012	80	0 -0.019	80	0 -0.3	74	0 -0.3	76.5	2.6	3	50°	0.02	390	810	1440	
LM60AJUU	6	60	0 -0.015	90	0 -0.022	110	0 -0.3	85	0 -0.3	86.5	3.15	3	50°	0.025	480	1020	1700	